

## Contents

- *Meet the Artist/Owner and Editor*
- *Updates*
- *Imagination Corner*
- *Featured Artist*
- *Workshops*
- *Contests & Winners*
- *Charity Events*
- *Seasonal Suggestions*
- *Suggested Books to Read*
- *Classifieds*
- *Contest Winners Artwork*

## Dates to Remember

### October

- *6th & 7th Heiner Hertling*
- *31th-Halloween*

### November

- *1st-All Saints Day*
- *2nd-Day of the Dead*
- *22nd-Thanksgiving*

### December

- *25th-Christmas*
- *31st-New Years Eve*

### January

- *1st-New Year*

## Meet the Artist/Owner and Editor

### Jodi A. Metcalf

Jodi A. Metcalf is the Artist/Owner of Metcalf's Specialty Gifts. She is also the author of this newsletter.

Jodi A. Metcalf lives in Cadillac Michigan with her family. She paints in several different mediums, as well as, creates homemade bath products, candles, and spice teas.

Her Artwork and crafts can be seen and purchased on her website at [www.metcalfsgifts.webs.com](http://www.metcalfsgifts.webs.com). You can also visit her site if you wish to donate funds to help those in need to receive help with heating costs, shelter costs, food, clothing, and baby items, etc.. and thank you for your support. (This will be the Letter to the Editor space in upcoming newsletters so please feel free to write and send it to [metcalfsgifts@gmail.com](mailto:metcalfsgifts@gmail.com) and write "LETTER TO THE EDITOR OF THE NEWSLETTER" in the subject line.)

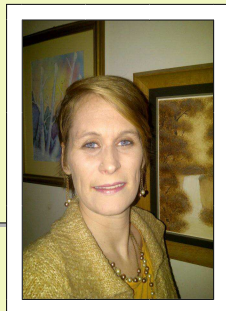
All your input will be greatly appreciated.

Thank you,

Sincerely,

Jodi A. Metcalf

Editor/Artist/Owner



## Updates

As this is the first issue of the newsletter, there are no updates at this time.

## Imagination Corner

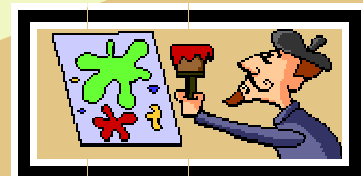
This is where I try to inspire a little creativity for everyone.

I like to try to think of things in ways that are visually stimulating, for instance, view your next piece like a clip from a movie or an illustration from a book. Now if I were to suggest a word, place, time period, etc.. what would you be picturing as a movie or illustration.

This is Imagination Corner.

The creative visual for October is: **Brown**

(What do you see when you think of Brown? Paper bags, ok from there you might see Paper lanterns that light up the sky. Or maybe you see Leaves turning at fall time and visualize the color changing trees. So get visualizing.)

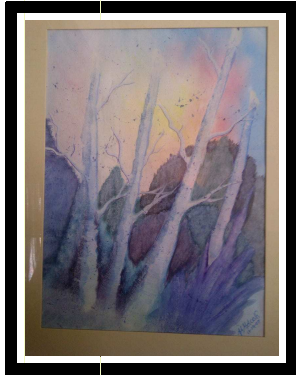


# Metcalfe's Specialty Gifts Newsletter

## Featured Artist

### Jodi A. Metcalf

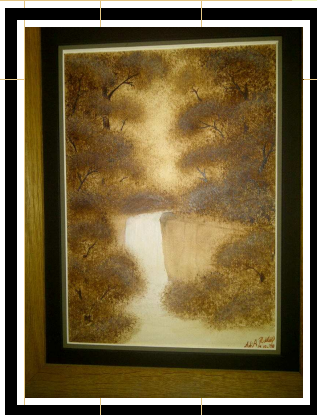
Jodi A. Metcalf is a Watercolor and Oil paint Artist. She also dabbles in digital photography, mixed media, and fabric art. She went to Elk Rapids High School and was taught by Denise Sorenson. After High school she went on to start classes in



Business at Baker College of Cadillac where she chose to further her artist career. She is self taught since high school and continues to paint still today. She is a landscape artist and still life photographer. Her favorite color is Black because it is a contradiction by definition (it is the absence of all color, but to make it you have to combined all the colors) and it goes with everthing.



The two paintings are watercolor: top one is "Birch Trees", the second is "Waterfall in the Woods" and the photograph is a Wild Shasta Daisy from my backyard.



## Workshops

**Title:** Heiner Hertling Plein Air Painting Workshop

**Dates:** October 6th & 7th.

**Times:** 9am-4pm

**Locations:** Milford MI



### Brief Description of the Workshop:

Heiner Hertling specializes in nature and wildlife painting. He is the author of the book "Your Brush with Nature" and host of the PBS painting show of the same name. For more information about the workshop or the instructor, visit

<http://artscouncilofwhitelake.org/NCworkshops.html>

## Contests & Winners

### Rules for All Contests:



Artwork must be your own. You can submit only one entry per contest. These contests are for fun only, there are no prizes given. By submitting your artwork in the contests you give the right to copy and/or display the winning artwork in this newsletter and on the website if the editor chooses to display there as well.

### Winners for this Month are:

Photography Contest: " "

By Artist:

Sculpture Contest: " "

By Artist:

Watercolor Contest: " "

By Artist:

Oil Contest: " "

By Artist:

Acrylics Contest: " "

By Artist:

Mixed Media Contest: " "

By Artist:

Graphic Arts Contest: " "

By Artist:

\*Artwork will be displayed on last page of the newsletters.

First Issue there are none

# Metcalf's Specialty Gifts Newsletter

## Charity Events

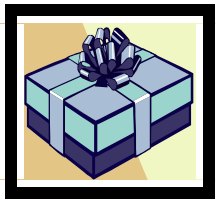
October is **Helpful Hands for Heating** Month

Any donation sum is accepted. Please help those in need of heat this winter.

Donation are used to help heat homes, buy warm clothes and other items such as boots, jackets, and gloves for those who need them.

People have been hit hard by the economic crunch and have lost or are on the brink of losing their homes and need a helping hand, or have lost their homes due to fire and need help getting warm clothes for winter.

Please be their helping hand, their shining star, their angel, their Santa Claus and keep them warm this winter. Please visit [www.metcalfgifts.webs.com](http://www.metcalfgifts.webs.com) and click on the donate button today, Thank you.



## Suggested Books to Read

This Months Books are:

**Why Marry A Millionaire? Just Be One! ... and while you're at it, change the world!**

by Wendy Robbins

**Monster**

by Christopher Pike

**Surrealists**

by Tim Martin

**The Key to Rondo**

by Emily Rodda

Happy Reading!



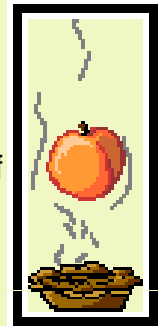
## Seasonal Suggestions

This section is for Seasonal inspiration. This could be anything from pictures to recipes to help inspire the creative mind.

### Caramel Pumpkin Pie

1 tub of whipped cream topping  
1 can of pumpkin pie filling  
1 tbsp of all spice  
1 squeeze bottle of caramel ice cream topping  
1 grahamcracker pie crust  
1/4 cup crushed nut (this could be walnut, pecan, almond, etc..)

Drizzle caramel stripes into the pie crust and sprinkle half of the nuts into the bottom of the pie crust. Blend with a spatula in a large mixing bowl the whipped cream topping, the all spice and the pumpkin pie filling and spoon into the pie crust, drizzles caramel stripes across the top of the pie and sprinkle the remaining nuts on top of the pie and refrigerate. A simple, quick, and non-bake recipe that makes 1- 9 inch pie.



## Classifieds

**Wooden Easel** - used wooden easel for sale. Still in great condition. \$50 or best offer. Please contact me at 1-231-555-5555.

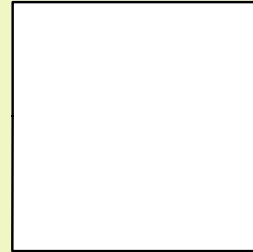
**New Canvases** - still in plastic wrap. 3 canvases size 11 x 16. Paid \$90 a piece, will sell for \$40 for all 3. Please call me at 1-231-555-5555.

**Loads of Fabric** - all different patterns. Great for craft projects, quilt blocks, and mixed media artwork. Please contact me at [loadsoffabric@fakeemail.com](mailto:loadsoffabric@fakeemail.com)

Contest Winners Artwork

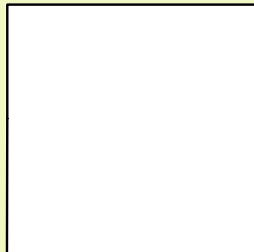
Oil Contest: “ “

By Artist:



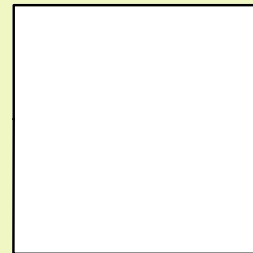
Photography Contest: “ “

By Artist:



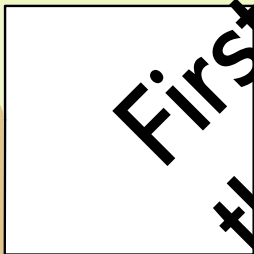
Watercolor Contest: “ “

By Artist:



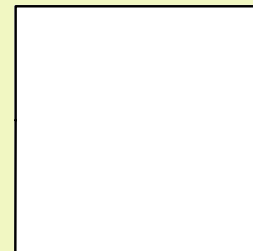
Sculpture Contest: “ “

By Artist:



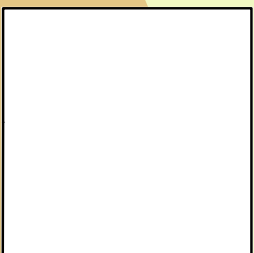
Acrylics Contest: “ “

By Artist:



Graphic Arts Contest: “ “

By Artist:



Mixed Media Contest: “ “

By Artist:



First Issue  
there are none